

# PRESS RELEASE

P.O. Box 860358 Plano, Texas 75086-0358  
972-941-7000 [www.plano.gov](http://www.plano.gov)



**For Immediate Release**  
February 2, 2012

Gerald Cosgrove  
Director of Public Works  
972-941-7152

## ***Segment of Spring Creek Parkway Closed for Reconstruction February 10 – 14, 2012***

Beginning Friday, February 10, 2012, 7:00am, a segment of Spring Creek Parkway between Parker Road and Park Boulevard will be closed for reconstruction, necessitating a motorist detour.

The City of Plano Street Department will close Spring Creek to motorists at a point south of Parker Road, extending to just north of Royal Oaks Drive. Motorists will not have access between this section of roadway, which contains no residential or business egress.

Motorists driving south on Spring Creek will detour west onto Parker Road, south on to Jupiter arriving back onto Spring Creek by turning east onto Royal Oaks Drive or further south onto Park Boulevard.

Motorists driving north on Spring Creek may detour west onto Park Boulevard or further north west onto Royal Oaks Drive, north onto Jupiter, traveling east on Parker Road to return to Spring Creek.

Electronic message boards are in place to advise motorists of the closure with message boards, barricading and additional signage in place during the construction period.

Construction is slated for completion on Tuesday, February 14, 2012.

**SEE MAP ATTACHED**

X X X

ds

*Phil Dyer*  
Mayor

*Pat Miner*  
Mayor Pro Tem

*Lissa Smith*  
Deputy Mayor Pro Tem

*Ben Harris*  
Place 2

*André Davidson*  
Place 3

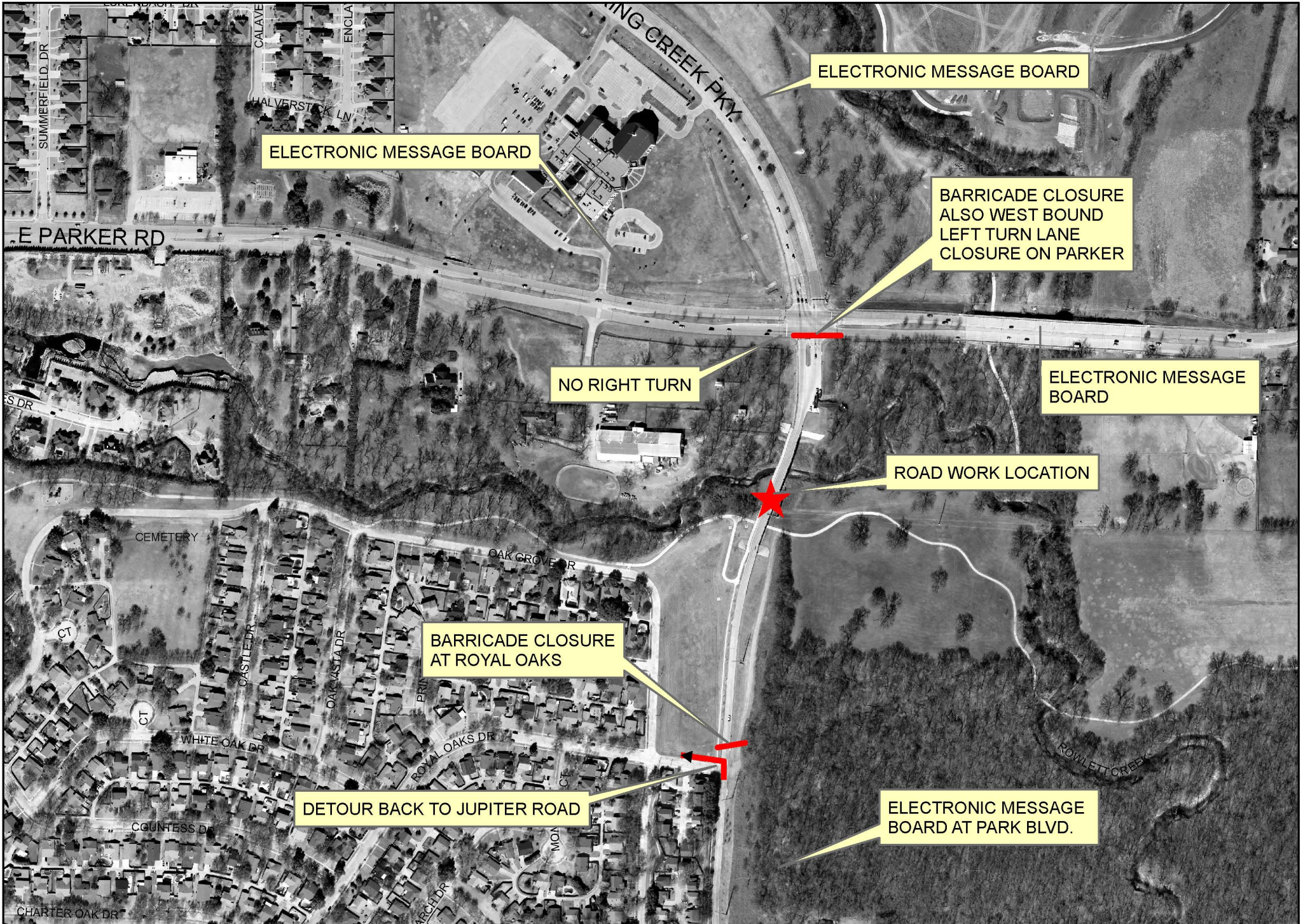
*Jim Duggan*  
Place 5

*Patrick Gallagher*  
Place 7

*Lee Dunlap*  
Place 8

*Bruce D. Glasscock*  
City Manager

# SPRING CREEK PARKWAY CLOSURE MAP AND BARRICADES



ELECTRONIC MESSAGE BOARD

ELECTRONIC MESSAGE BOARD

BARRICADE CLOSURE ALSO WEST BOUND LEFT TURN LANE CLOSURE ON PARKER

NO RIGHT TURN

ELECTRONIC MESSAGE BOARD

ROAD WORK LOCATION

BARRICADE CLOSURE AT ROYAL OAKS

DETOUR BACK TO JUPITER ROAD

ELECTRONIC MESSAGE BOARD AT PARK BLVD.