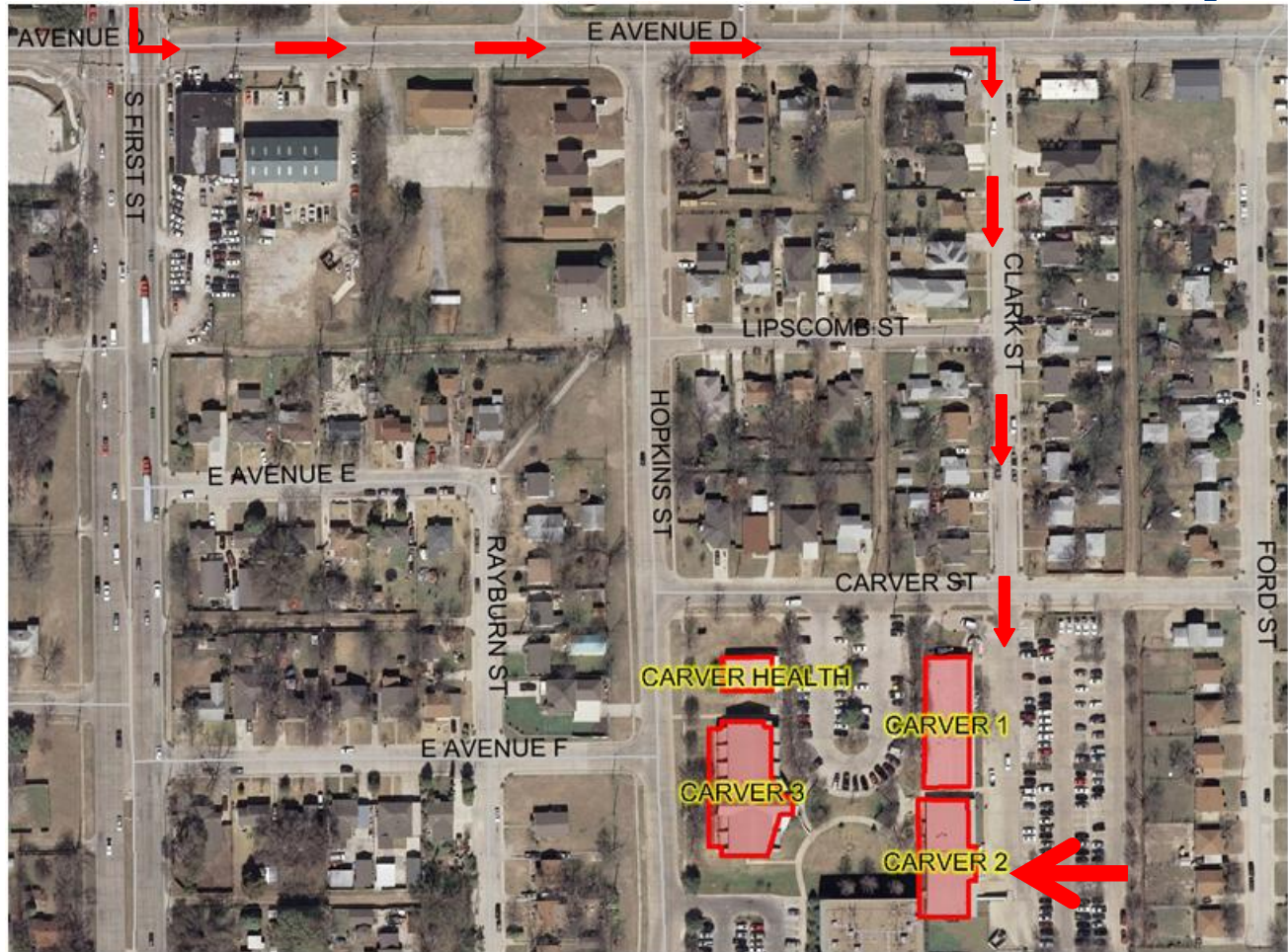


## HOW TO FIND COGU (Garland's Training Facility):



232 Carver St., Garland, TX 75040

### Directions from City Hall:

- Go East on State or Main St.
- Turn Right (South) onto S. Fifth Street and prepare to take a left very soon
- Turn Left (East) onto Avenue D, and prepare to take an almost immediate Right
- Turn Right on Clark Street and proceed to Carver Street, but do not turn. Precede STRAIGHT AHEAD into the parking lot. **232 Carver** is **Building Two** of the Carver complex. From this parking lot, it is the second building on your right.

### Directions from President George Bush Turnpike:

- Merge onto President George Bush Turnpike East (Portions toll)
- Take TX-78 S exit toward Garland. Merge onto TX-78 S
- Turn left onto S 1st St/TX-78 S. Continue to follow S 1st St
- Turn Left (East) onto Avenue D, and prepare to take an almost immediate Right
- Turn Right on Clark Street and proceed to Carver Street, but do not turn. Precede STRAIGHT AHEAD into the parking lot. 232 Carver is Building Two of the Carver complex. From this parking lot, it is the second building on your right.

### HR Training Staff:

COGULC (Training Facility)  
[cogumail@garlandtx.gov](mailto:cogumail@garlandtx.gov)  
(972) 205-3357

Cheryl Ziriak, Training Assistant  
[cziriak@garlandtx.gov](mailto:cziriak@garlandtx.gov)  
(972) 205-2407

Brenda Vega, Training & Development Manager  
[bvega@garlandtx.gov](mailto:bvega@garlandtx.gov)  
(972) 205-2836